

The Forbes

@WATERKLOOF

Luxury granted

WELCOME TO THE PURUIT OF PURE ELEGANCE AND STYLE

Discover contemporary living in the heart of the iconic Waterkloof heights suburb. Conveniently located close to well known retail centres, restaurants, gyms, and schools. A luxurious lock-up and go unit with spectacular views over Pretoria, a must have investment.

The interior is professionally designed with a spacious, modern open plan entertainment area and state of the art kitchen. The large bedrooms have ample natural light, walk in closets and on suite bathrooms.

With 6 unit types to choose from, a variety of lifestyles can be accommodated.

THE FORBES @ WATERKLOOF
ON THE DOORSTEP OF CONVENIENCE



The Forbes

CONTENTS

Location
On the doorstep of convenience

05

Facts and features

07

Apartment Types
Contemporary lifestyle

09

Benefits of Investing

18

Contact details
Purchase process

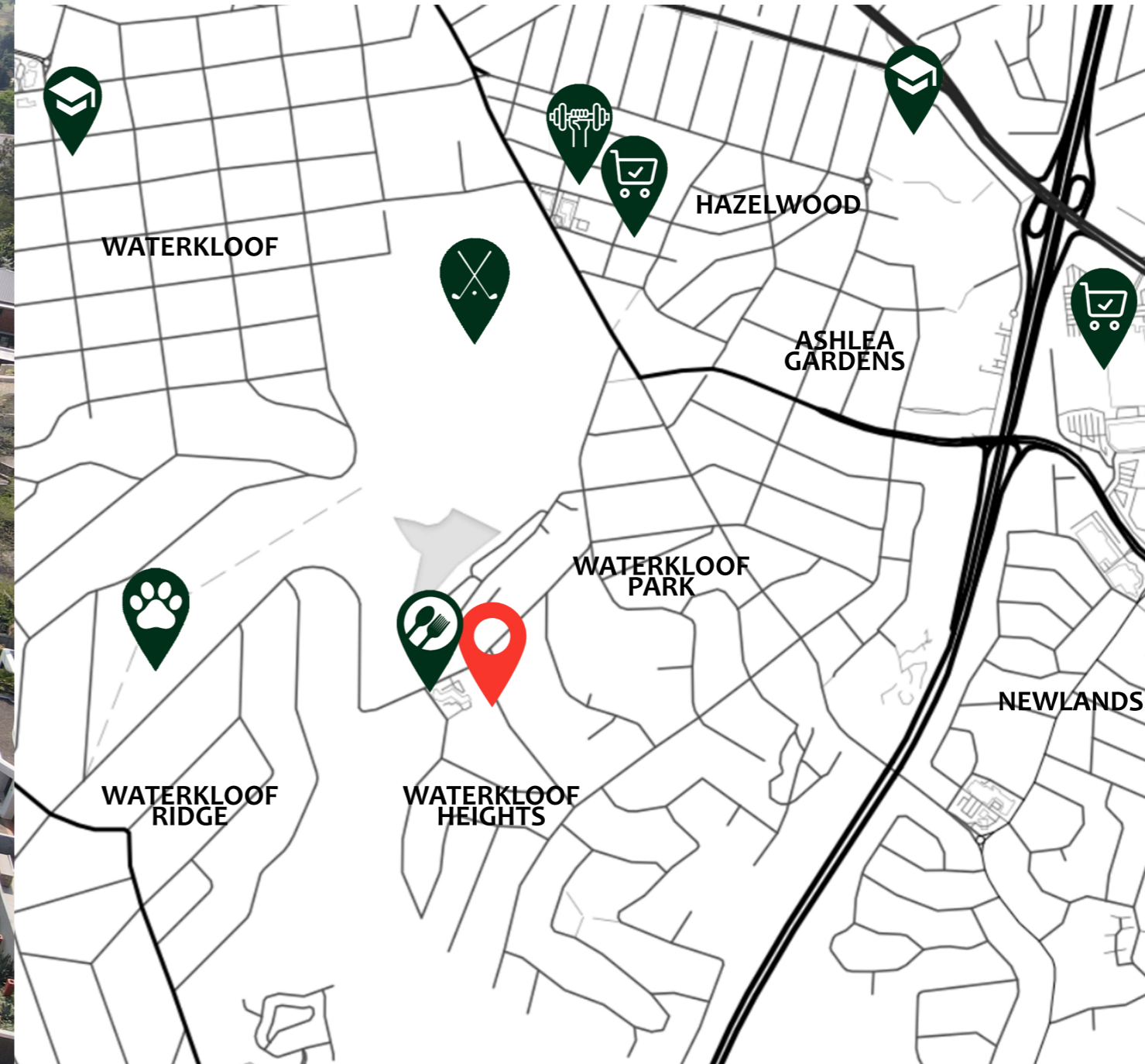
20









THE FORBES @ WATERKLOOF
ON THE DOORSTEP OF CONVENIENCE



Location - Pretoria



THE FORBES @ WATERKLOOF ON THE DOORSTEP OF CONVENIENCE

- 
THE CLUB HAZELWOOD
1.8km
MENLYN PARK SHOPPING CENTRE
2.9km
- 
PLANET FITNESS HAZELWOOD
1.8km
- 
WATERKLOOF DOG PARK
1.8km
- 
PRIVA
150m
THE VILLAGE
2.4km
- 
WATERKLOOF PRIMARY SCHOOL
3.5km
EDUVOS
2.8km
MENLO PARK HIGH SCHOOL
3.1km
- 
PRETORIA COUNTRY CLUB
3.4km

Facts and Features

LUXURY APARTMENT LIVING AT ITS FINEST

Estimated completion mid 2024

12 Luxury apartments

6 x Three bedroom apartments

2 x Two bedroom apartments

4 x Bachelor apartments

24 hour security

Garage and basement parking for every unit

Solar compatible

Backup water

Wifi

Air conditioning

Exceptional unobstructed views over Pretoria

THE FORBES @ WATERKLOOF

ON THE DOORSTEP OF CONVENIENCE





Apartment Types

EVERY DESIGN ASPECT SPEAKS OF ELEGANCE AND SOPHISTICATION

6 x Three bedroom apartments
2 x Two bedroom apartments
4 x Bachelor apartments

THE FORBES @ WATERKLOOF
ON THE DOORSTEP OF CONVENIENCE

Three Bedroom ground floor apartment

146.25m² unit excluding patio

Two units available

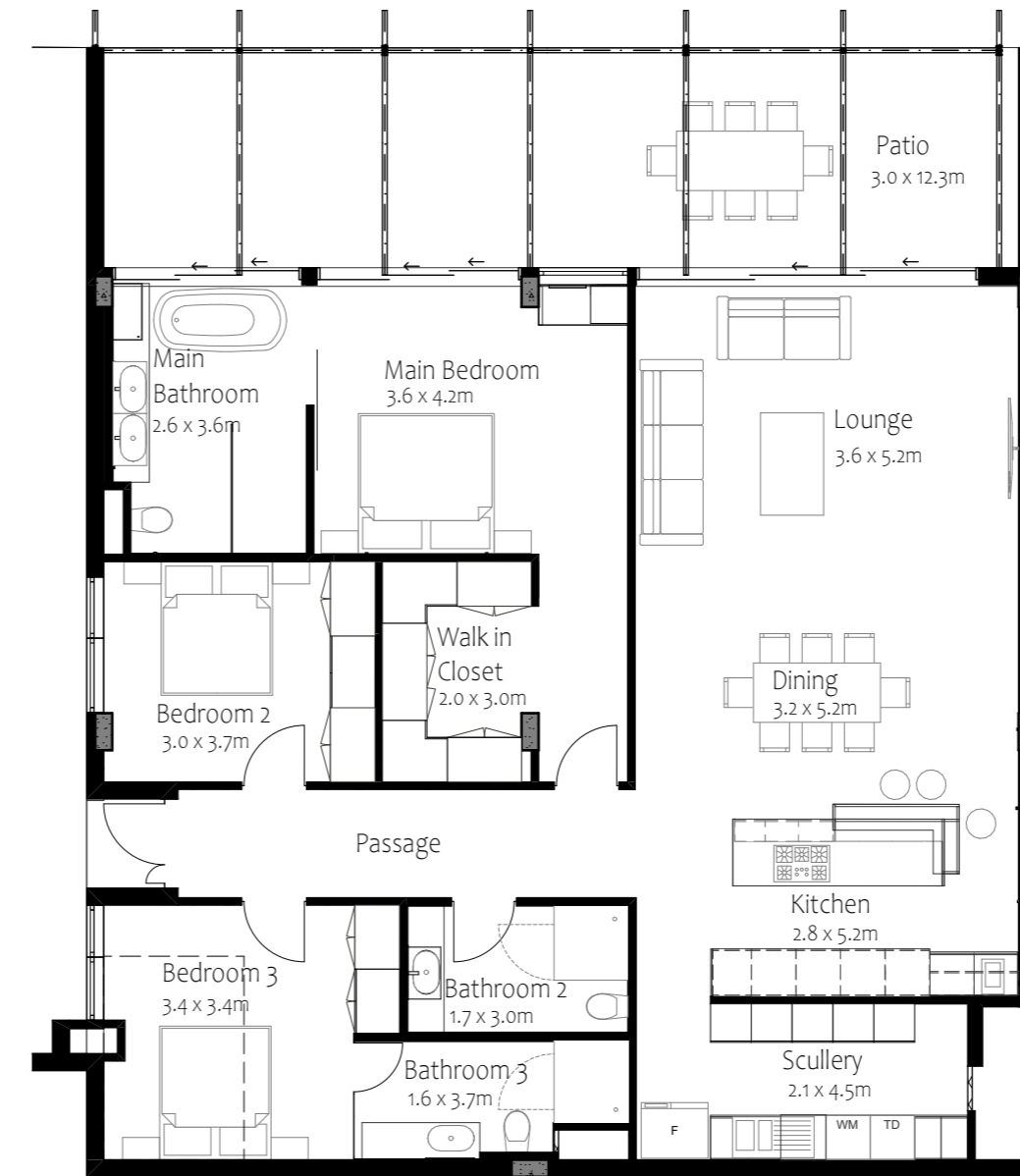
Three Bedroom apartment

Two on suite bathrooms

Private ground floor garden

Large open plan kitchen, dining and living areas

Double garage parking



GROUND FLOOR GARDEN UNIT
Scale 1:100



One Bedroom first floor apartment

UNIT A

51m² unit excluding patio

Two units available

1 Bedroom apartment

On suite bathroom

Guest WC

Private patio

Spacious kitchen, dining and living area

Double basement parking

UNIT B

44.75m² unit excluding patio

Two units available

1 Bedroom apartment

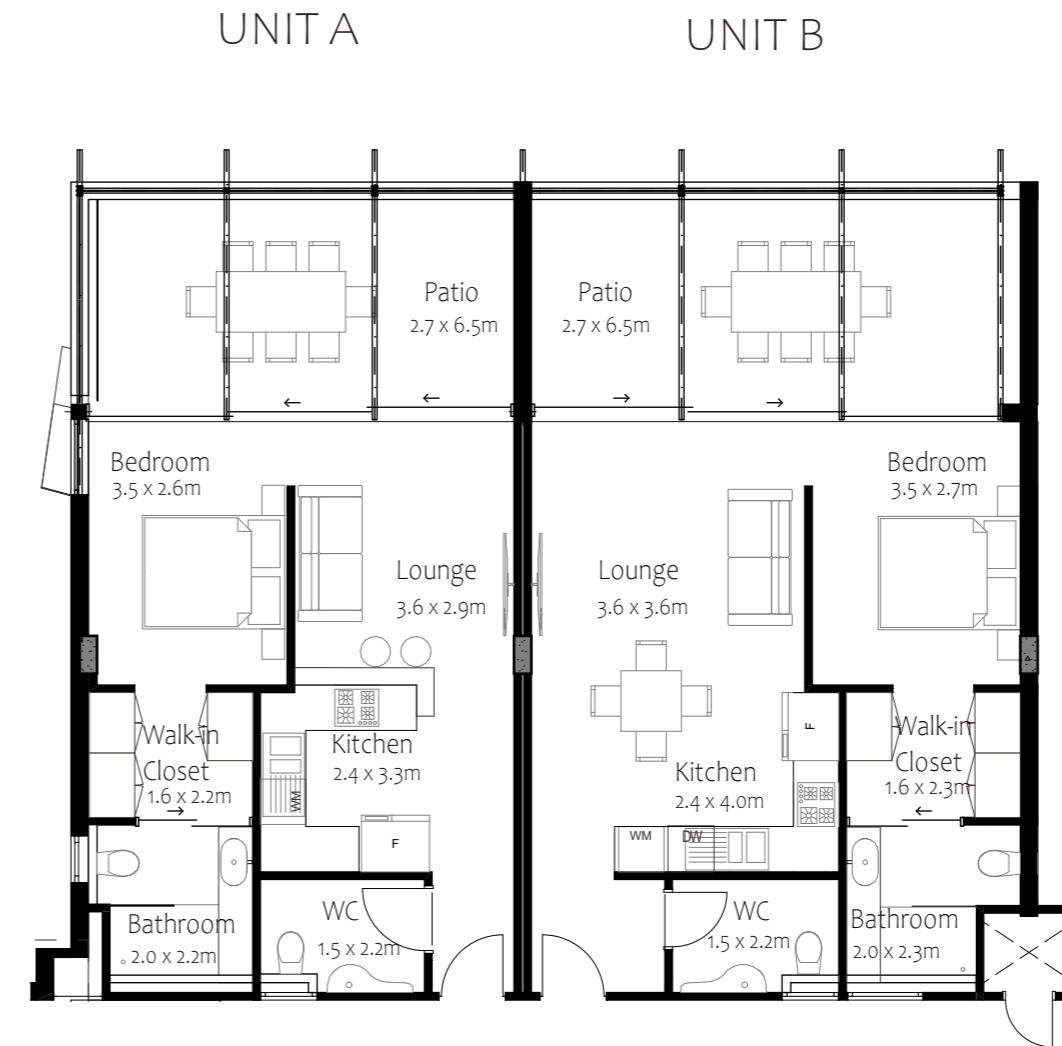
On suite bathroom

Guest WC

Private patio

Spacious kitchen, dining and living area

Double basement parking



FIRST FLOOR UNIT PLANS

Scale 1:100

Three Bedroom Second floor apartment

197.5m² unit excluding patio

Two units available

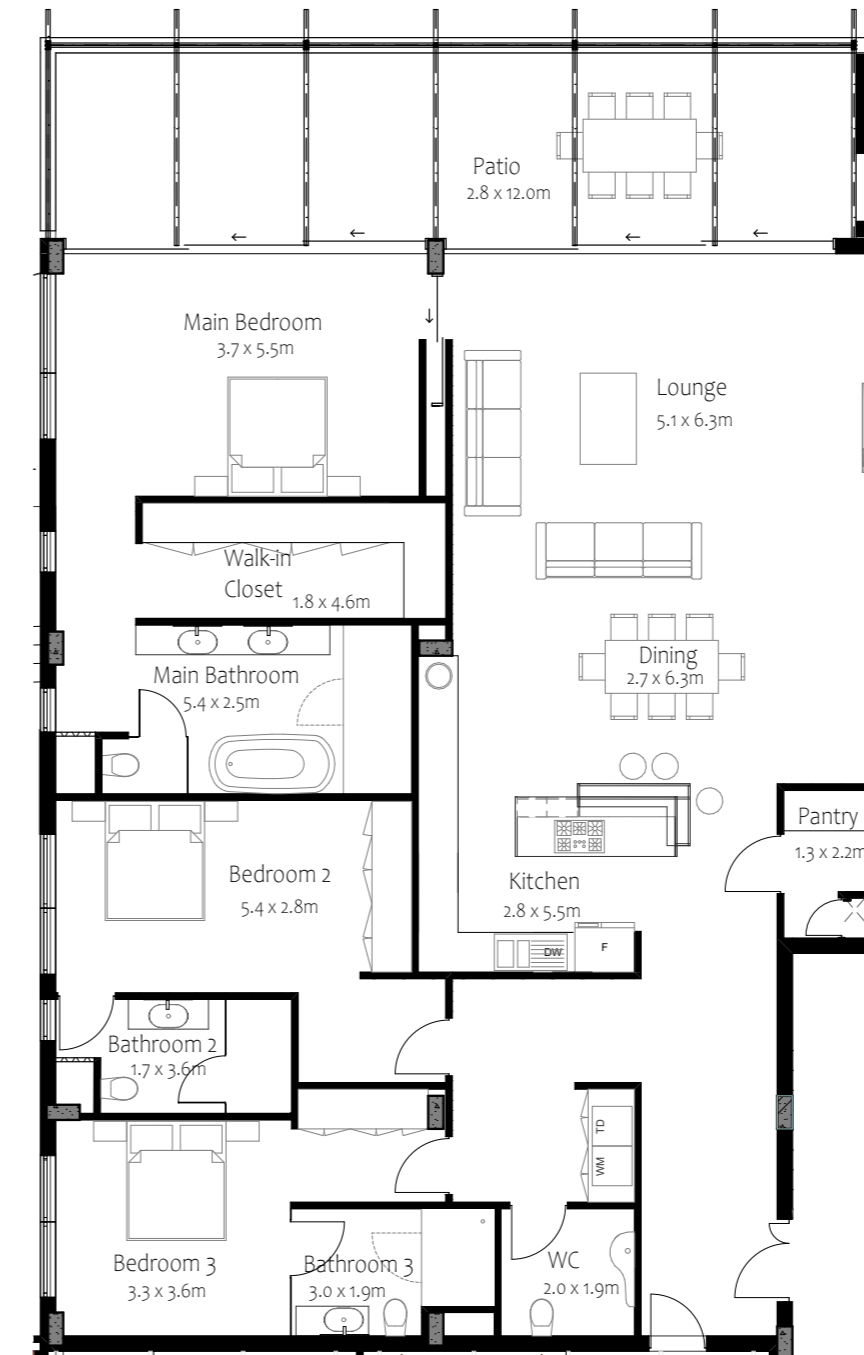
3 Bedroom apartment all on suite bathrooms

Guest WC

Private patio with built in wood braai

Spacious kitchen, dining and living area

Double garage parking with direct access into the unit



SECOND FLOOR UNIT PLAN
Scale NTS

Three Bedroom Third floor apartment

160m² unit excluding patio

Two units available

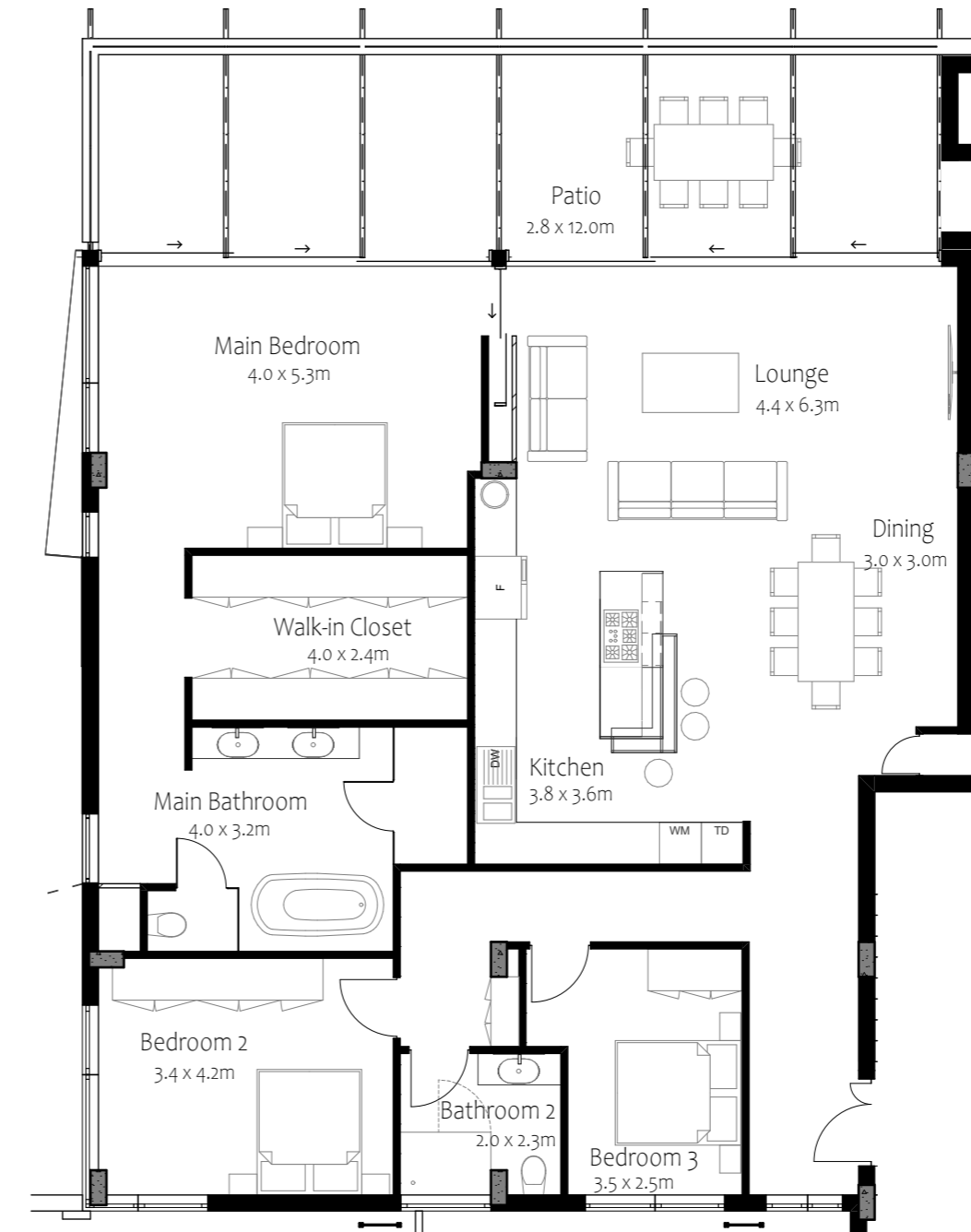
3 Bedroom apartment all on suite bathrooms

Guest WC

Private patio with built in wood braai

Spacious kitchen, dining and living area

Double garage parking



THIRD FLOOR UNIT PLAN

Scale 1:100

Two Bedroom Fourth floor apartment

123m² unit excluding patio

Two units available

2 Bedroom apartment

Main bedroom with on suite bathroom

Private patio with built in wood braai

Spacious kitchen, dining and living area

Double garage parking



FOURTH FLOOR UNIT PLAN
Scale 1:100



Benefits of Investing

Rare opportunity to own an apartment in Waterkloof Heights
High rental demand area
Short term rental friendly
Ideal location



THE FORBES @ WATERKLOOF
ON THE DOORSTEP OF CONVENIENCE



The Forbes

@WATERKLOOF



swart & associates
architects(pty)ltd

